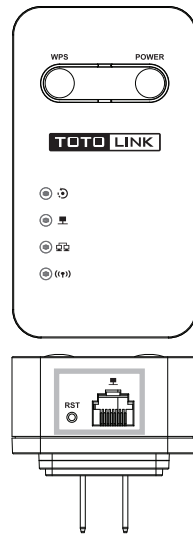
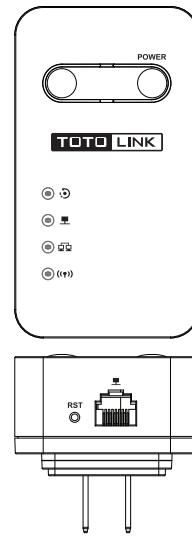


# 1 Product Introduction

PLW350A (Wi-Fi Powerline Extender)



PLW350 (Add-on Extender)



BUTTON & PORT	DESCRIPTION
POWER	Power on or off the device.
WPS (PLW350A)	Build secure wireless connection to upper Wi-Fi router.
RST	Reset the device to factory default settings.
Ethernet Port	Connect to upper router or PC terminal

LED	STATUS	DESCRIPTION
SYS	On	WPS is working.
	Blink	The device is working normally with WPS disabled.
	Off	Power is off.
Ethernet	On	There is a device connected to Ethernet port.
	Blink	There is data transfer through Ethernet cable.
Pair	On	PLW350 is paired with PLW350A successfully.
	Blink	There is data transfer between PLW350A and PLW350.
	Off	PLW350 is failed to pair with PLW350A.
WiFi	Blink	Wireless transmission is working normally.

**NOTE:**  
PLW350A is designed to connect your home router, while the PLW350 is used to extend your home Wi-Fi to more rooms. To add more PLW350, simply plug the PLW350 into the wall socket on the same electrical circuit.

# 2 Working Modes

## Repeater Mode (WPS for Quick Wi-Fi Extension)

If your home router supports WPS, please follow below steps.

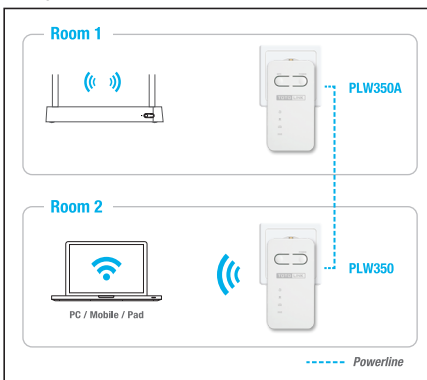
- 1 Press the WPS button on your Wi-Fi router for 2 seconds.



- 2 Within 2 minutes, press the WPS button on PLW350A for 1 second.



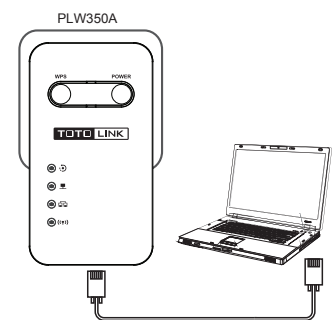
- 3 Until the SYS LED indicator turns solid on, the PLW350A has connected to your router successfully. Simply plug the PLW350 into wall socket on the same electrical circuit, it will connect to PLW350A automatically through powerline.



## Bridge Mode (Turns Wired Connection to Wi-Fi)

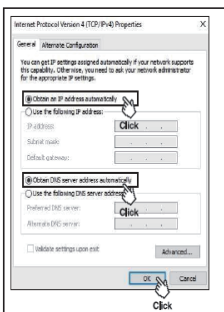
If your router don't support WPS, please follow below operations to setup the PLW350A first before connecting it to your router.

- 1 connect your PC to PLW350A by Ethernet cable

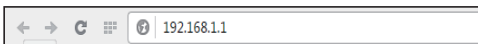


# 2 Working Modes

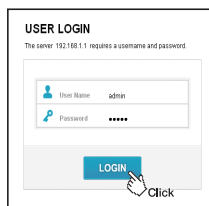
- 2 Setup your PC's Internet Protocol Version 4 (TCP/IPv4) to "Obtain an IP address automatically".



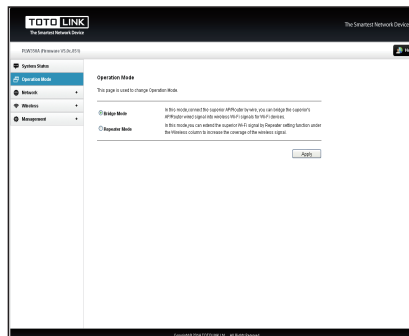
- 3 Open any browser, type 192.168.1.1 in the address field. Then press Enter.



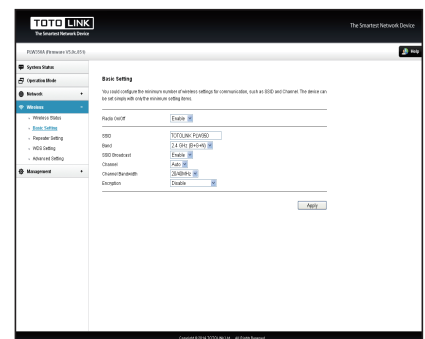
- 4 Enter User Name and Password, both are admin in lower case letters.



- 5 Click Operation Mode, select Bridge Mode. Click Apply.



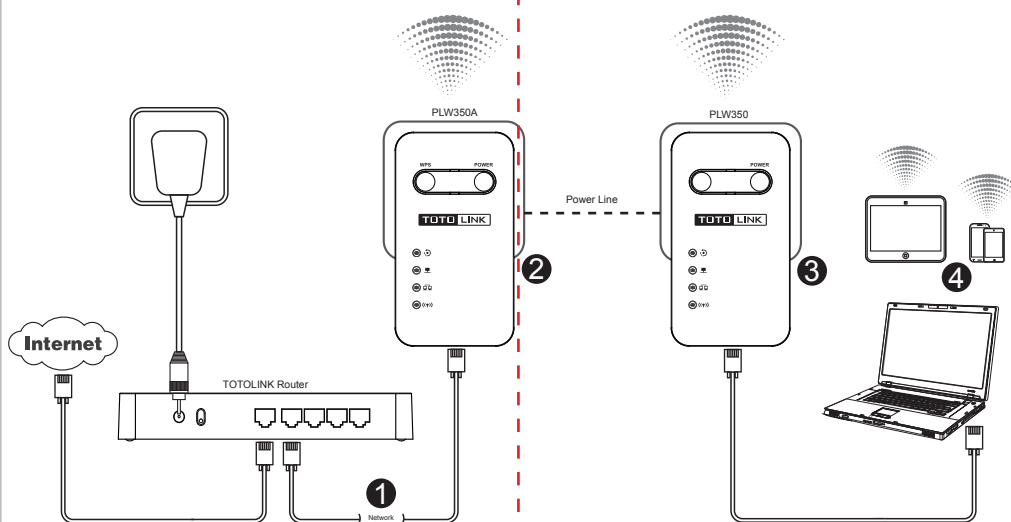
- 6 Then go to Wireless---Basic Setting, setup the Wireless parameters, including SSID and Wi-Fi password.



- 7 click Apply to save your setting.

**Tips:**  
For add-on extender, the wireless name and password are the same as upper extender PLW350A. You are only allowed to setup SSID and Password for PLW350A.

Now PLW350A is ready. Disconnect the cable from your PC and plug it to any one of your router's LAN port. Then plug PLW350 into wall socket on the same electrical circuit. New wireless network is built successfully. Enjoy your home Wi-Fi.



# 5 FAQ

- 1 How do I reset my extender?

A1. With the extender powered on, use a pin to press and hold the RST button until all LEDs turns off. When the SYS LED turns on and then keep blinking, the reset process is complete.

- 2 How to troubleshoot if there is no Internet connection throughout my powerline network?

A1. Make sure all extenders are on the same electrical circuit.  
A2. Make sure all hardware connections are correctly.  
A3. Make sure the Pair LEDs light up on all your extenders. If they do not, plug them into the wall socket again.  
A4. Check if you have an Internet connection by connection the computer directly to the modem or router.  
A5. Make sure your computer's IP address is in the same segment as your router's.