



EdgeMAX®

Advanced Network Routers

Model: ERPro-8, ER-8, ERPoe-5, ERLite-3

Sophisticated Routing Features

Advanced Security, Monitoring, and Management

High-Performance Gigabit Ports





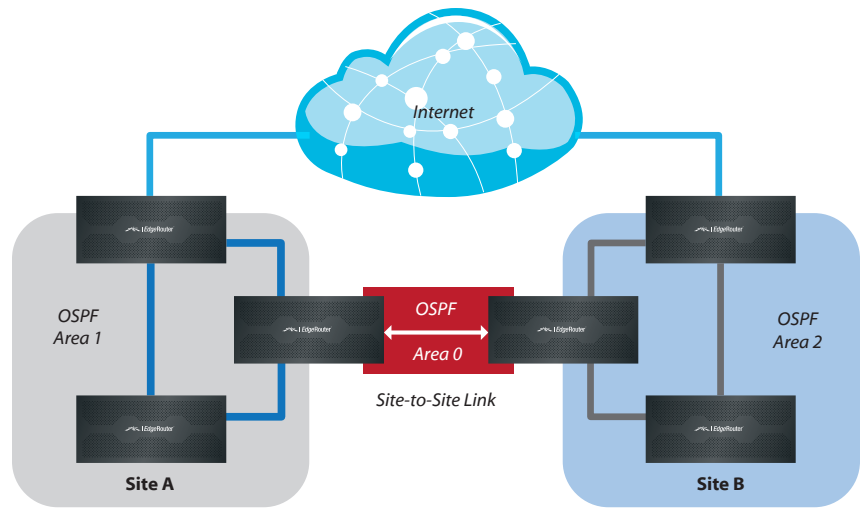
Advanced Routing Technology for the Masses

Introducing the EdgeRouter™ from Ubiquiti Networks™, part of the EdgeMAX® platform. EdgeRouters combine carrier-class reliability with enterprise-level features in a compact and affordable unit.

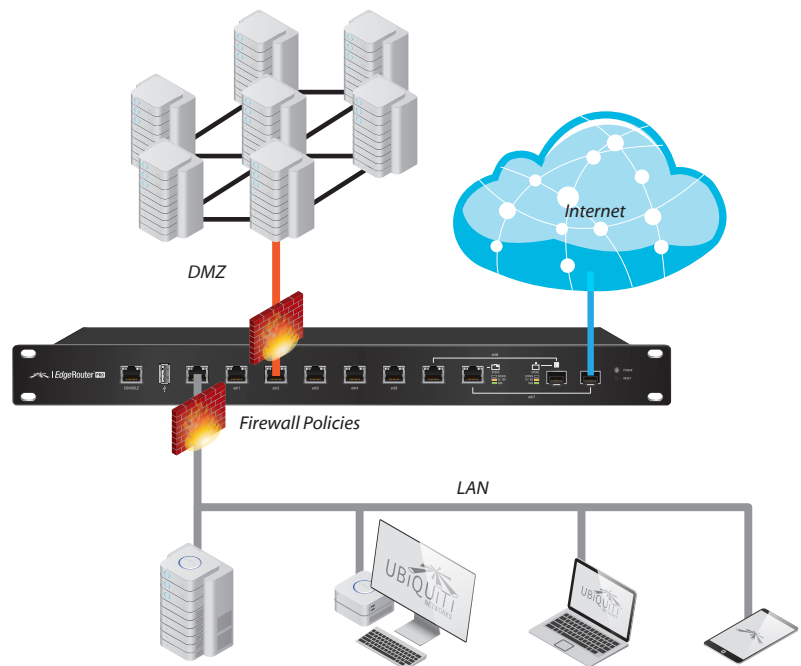
The EdgeRouter PoE and EdgeRouter Lite models are the world's first economical router capable of routing up to 1 million packets per second.

Available in a rackmountable form factor with eight functional ports, the EdgeRouter Pro and 8-Port EdgeRouter models are even faster, capable of routing up to 2 million+ packets per second.

Powered by a proprietary and intuitive graphical interface, EdgeOS™, EdgeRouters can easily be configured for routing, security, and management features required to efficiently run your network. For advanced network professionals, an integrated CLI is available for quick and direct access using familiar commands.



Typical Service Provider Deployment



Example of Enterprise Deployment with SFP Connection to the Internet

Manage Your Network

DHCP Server Set up multiple DHCP servers to assign IP ranges in different subnets on the different interfaces. Easily control dynamic and static IP addressing for your network devices.

Monitoring Tools Conveniently track network activity and devices from tools such as *Ping*, *Trace*, *Discover*, *Packet Capture*, and *Log Monitor*.

User Accounts Manage access to the EdgeRouter using unique administrator and operator accounts.

Secure Your Network

Firewall Policies Organize the rules you apply in the order you specify.

Firewall Groups Apply the policies to groups filtered by IP address, network address, or port number.

NAT Rules The EdgeRouter changes packet addressing based on your customized source and destination NAT rules.

Direct Traffic Flow

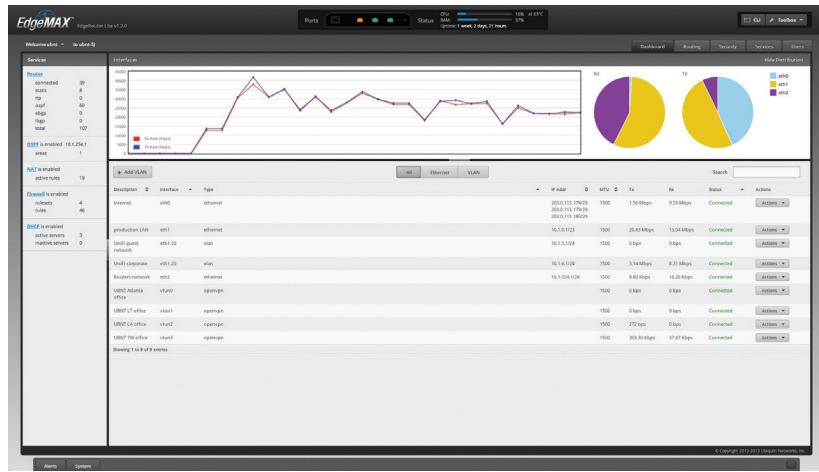
Interfaces Each Gigabit port functions as an independent interface. You can also configure Virtual Local Area Network (VLAN) interfaces for network segmentation.

Routing Configure static routes and dynamic routing protocols to effectively manage the routes used by the EdgeRouter.

With these capabilities and more, the EdgeRouter provides the centralized control you need to optimize the performance and reliability of your network.

Intuitive User Interface

The EdgeRouter provides a graphical user interface designed for convenient setup and control. Accessed via a network port and web browser, the user-friendly interface provides intuitive management with a virtual view of the ports, displaying physical connectivity, speed, and status. The Dashboard displays detailed statistics: IP information, MTU, transmit and receive speeds, and status for each physical and virtual interface.



Powerful Features

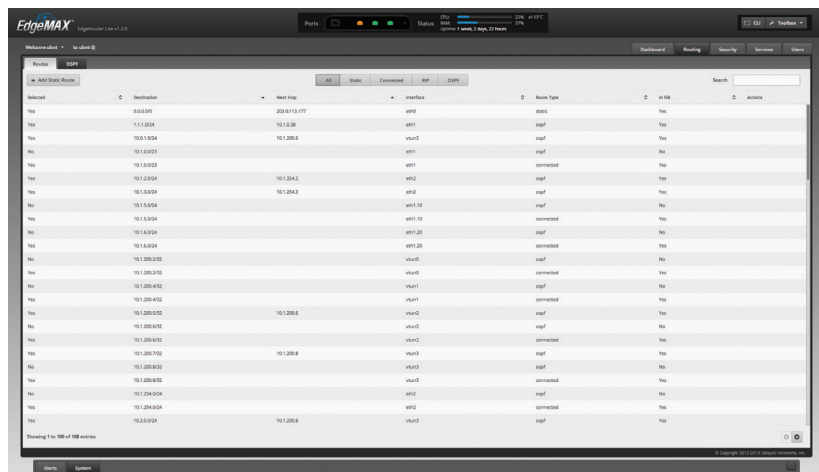
EdgeOS is a sophisticated operating system loaded with robust features, including:

- Static routes and support of routing protocols: OSPF, RIP, and BGP
- Firewall policies and NAT rules
- DHCP services
- Quality of Service (QoS)
- Network administration and monitoring tools
- Comprehensive IPv6 support
- Choice of configuration methods: the graphical user interface to visualize the workings of your network or the Command Line Interface (CLI) to use advanced, command-driven configuration

Configuration by CLI

The CLI provides quick and flexible configuration by command line and features the following:

- For power users, configuration and monitoring of all advanced features
- Direct access to standard Linux tools and shell commands
- CLI access through the serial console port, SSH, Telnet, and the graphical user interface



```

Welcome to EdgeOS
user@edge:~$ ssh user@10.0.0.1
Password:
Last login: Fri Aug 16 10:24:16 PDT 2013 on pts/0
Linux user@edge 3.10.102 #1 SMP Thu Jul 26 18:21:05 PDT 2012; ipset4
Welcome to EdgeOS
user@edge~$ ssh user@10.0.0.1
user@edge~$ ssh user@10.0.0.1
Possible completions:
add          Add an object to a set/service
clear       Clear system information
configure   Enter configuration mode
connect     Establish a connection
copy       Copy data
debug      Enable debugging of specified routing protocol
delete     Delete a file
disconnect Take down a connection
generate   Generate an object
initial-setup Disable initial configuration dialog
ping      Send Internet Control Message Protocol (ICMP) echo request
ping6    Send IPv6 Internet Control Message Protocol (ICMPv6) echo request
reboot    Reboot the system
rename   Rename specified variable
remove   Remove an object from set/service
rename   Rename something
rename  Rename specified variable
reset    Reset a service
restart Restart a service
set      Set system or shell options
    
```

Models

EdgeRouter PRO

Model: ERPro-8

- (6) Gigabit routing ports
- (2) Gigabit RJ45/SFP combination ports
- 2 million+ packets per second for 64-byte packets
- 8 Gbps for packets 512 bytes or larger in size
- Rackmountable



Front Panel



Back Panel

8-Port EdgeRouter

Model: ER-8

- (8) Gigabit routing ports
- 2 million packets per second for 64-byte packets
- 8 Gbps for packets 512 bytes or larger in size
- Rackmountable



Front Panel



Back Panel

Models

EdgeRouter PoE

Model: ERPoe-5

- (5) Gigabit routing ports
- (5) PoE configurable ports
- Supports 24V or 48V* PoE
- (3) ports configurable for switching
- 1 million packets per second for 64-byte packets



Front Panel



Back Panel

EdgeRouter Lite

Model: ERLite-3

- (3) Gigabit routing ports
- 1 million packets per second for 64-byte packets
- Silent, fanless operation
- Compact, durable metal casing



Front Panel



Back Panel



Software Specifications

EdgeOS	
Interface/Encapsulation	Ethernet 802.1q VLAN PPPoE GRE IP in IP Bridging Bonding (802.3ad)
Addressing	Static IPv4/IPv6 Addressing DHCP/DHCPv6
Routing	Static Routes OSPF/OSPFv3 RIP/RIPng BGP (with IPv6 Support) IGMP Proxy
Security	ACL-Based Firewall Zone-Based Firewall NAT
VPN	IPSec Site-to-Site and Remote Access OpenVPN Site-to-Site and Remote Access PPTP Remote Access L2TP Remote Access PPTP Client
Services	DHCP/DHCPv6 Server DHCP/DHCPv6 Relay Dynamic DNS DNS Forwarding VRRP RADIUS Client Web Caching PPPoE Server
QoS	FIFO Stochastic Fairness Queueing Random Early Detection Token Bucket Filter Deficit Round Robin Hierarchical Token Bucket Ingress Policing
Management	Web UI CLI (Console, SSH, Telnet) SNMP NetFlow LLDP NTP UBNT Discovery Protocol Logging

EdgeRouter™ PRO

Hardware Specifications

Model: ERPro-8	
Dimensions	484 x 164 x 44 mm
Weight	2.3 kg
Max. Power Consumption	40 W
Power	Internal AC/DC Power Adapter, 60 W (24V, 2.5A)
Power Input	110 - 240VAC
Button	Reset
LED	Power
Processor	Dual-Core 1 GHz, MIPS64 with Hardware Acceleration for Packet Processing
System Memory	2 GB DDR3 RAM
On-Board Flash Storage	4 GB
Certifications	CE, FCC, IC
Rack-Mount	Yes
Operating Temperature	-10 to 45° C
Operating Humidity	10 - 90% Non-Condensing
Layer 3 Forwarding Performance	
Packet Size: 64 Bytes	2,400,000 pps
Packet Size: 512 Bytes or Larger	8 Gbps (Line Rate)
LEDs Per Port	
Serial Console Port	
Data Ports	Speed/Link/Activity
Networking Interfaces	
Serial Console Port	(1) RJ45 Serial Port
Data Ports	(6) 10/100/1000 RJ45 Ports (2) 10/100/1000 RJ45/SFP Combination Ports



EdgeRouter™

Hardware Specifications

Model: ER-8	
Dimensions	484 x 164 x 44 mm
Weight	2.3 kg
Power	35 W
Power Method	Internal AC/DC Power Adapter, 60 W (24V, 2.5A)
Power Supply	110 - 240VAC
Button	Reset
LED	Power
Processor	Dual-Core 800 MHz, MIPS64 with Hardware Acceleration for Packet Processing
System Memory	2 GB DDR3 RAM
On-Board Flash Storage	4 GB
Certifications	CE, FCC, IC
Rack-Mount	Yes
Operating Temperature	-10 to 45° C
Operating Humidity	10 - 90% Non-Condensing
Layer 3 Forwarding Performance	
Packet Size: 64 Bytes	2,000,000 pps
Packet Size: 512 Bytes or Larger	8 Gbps (Line Rate)
LEDs Per Port	
Serial Console Port	
Data Ports	Speed/Link/Activity
Networking Interfaces	
Serial Console Port	(1) RJ45 Serial Port
Data Ports	(8) 10/100/1000 Ethernet Ports



Hardware Specifications

Model: ERPoe-5	
Dimensions	200 x 90 x 30 mm
Weight	360 g
Max. Power Consumption	60 W
Power	24VDC, 2.5A Power Adapter (Included)
Power Input	24VDC Input (Supported Range: 18 to 26VDC) or 48VDC Input (Supported Range: 38 to 54VDC)
Button	Reset
Processor	Dual-Core 500 MHz, MIPS64 with Hardware Acceleration for Packet Processing
System Memory	512 MB DDR2 RAM
On-Board Flash Storage	2 GB
Certifications	CE, FCC, IC
Wall-Mount	Yes
Operating Temperature	-10 to 45° C
Operating Humidity	10 - 90% Non-Condensing
Layer 3 Forwarding Performance	
Packet Size: 64 Bytes	1,000,000 pps
Packet Size: 512 Bytes or Larger	3 Gbps (Line Rate)
LEDs Per Port	
Serial Console Port	Power
Data Ports	PoE, Speed/Link/Activity
PoE Configurable Per Port	
Serial Console Port	N/A
Data Ports	Off/24V/48V*
Networking Interfaces	
Serial Console Port	(1) RJ45 Serial Port
Data Ports	(2) 10/100/1000 Ethernet Router Ports (3) 10/100/1000 Ethernet Router/Switch Ports

* 48V available when using 48VDC Power Adapter (not included).



EdgeRouter™ LITE

Hardware Specifications

Model: ERLite-3	
Dimensions	200 x 90 x 30 mm
Weight	345 g
Max. Power Consumption	7 W
Power	12VDC, 1A Power Adapter (Included)
Power Input	9 to 24VDC Supported Voltage Range
Button	Reset
Processor	Dual-Core 500 MHz, MIPS64 with Hardware Acceleration for Packet Processing
System Memory	512 MB DDR2 RAM
On-Board Flash Storage	2 GB
Certifications	CE, FCC, IC
Wall-Mount	Yes
Operating Temperature	-10 to 45° C
Operating Humidity	10 - 90% Non-Condensing
Layer 3 Forwarding Performance	
Packet Size: 64 Bytes	1,000,000 pps
Packet Size: 512 Bytes or Larger	3 Gbps (Line Rate)
LEDs Per Port	
Serial Console Port	Power
Data Ports	Speed/Link/Activity
Networking Interfaces	
Serial Console Port	(1) RJ45 Serial Port
Data Ports	(3) 10/100/1000 Ethernet Ports



For further information, please visit www.ubnt.com.

All specifications in this document are subject to change without notice.

© 2012-2013 Ubiquiti Networks, Inc. All rights reserved. EdgeMAX®, EdgeOS™, EdgeRouter™, Ubiquiti Networks™, and the Ubiquiti logo® are trademarks or registered trademarks of Ubiquiti Networks, Inc. in the United States and in other countries.

 www.ubnt.com/edgemax


UBIQUITI
NETWORKS

 www.ubnt.com

JL101413