



Sector antenna JSC - 16 - 60 MIMO

Dual-polarized sector antenna JSC-16-60 MIMO is designed for sector links at the frequency band 5 GHz. The antenna is designed for the links in the area with high interference or to divide of the area to the several sectors.

Electrical parameters:

Frequency range	5,4 – 5,85 GHz
Gain	16,0 ± 0,6 dBi
VSWR	≤ 1,5
Port isolation	30 dB
Beamwidth <small>-3 dB</small>	60° (Azimuth)
Beamwidth <small>-6 dB</small>	90° (Azimuth)
Beamwidth <small>-3 dB</small>	8,5° (Elevation)
Polarization	Vertical and Horizontal

Mechanical parameters:

Type of connector	N – female , R-SMA
Design of connector	gold-plated contacts, dielectric PTFE (Teflon®)
Cover	UV stabilized plastic ABS
Bonding of covers	technology \Di-Fix\ - Lifetime guarantee strength
Back	sheet from aluminum alloy + galvanic coating
Installation for mast	∅ 19 - 54 mm
Dimensions (without connectors)	128 mm x 326 mm x 30 mm

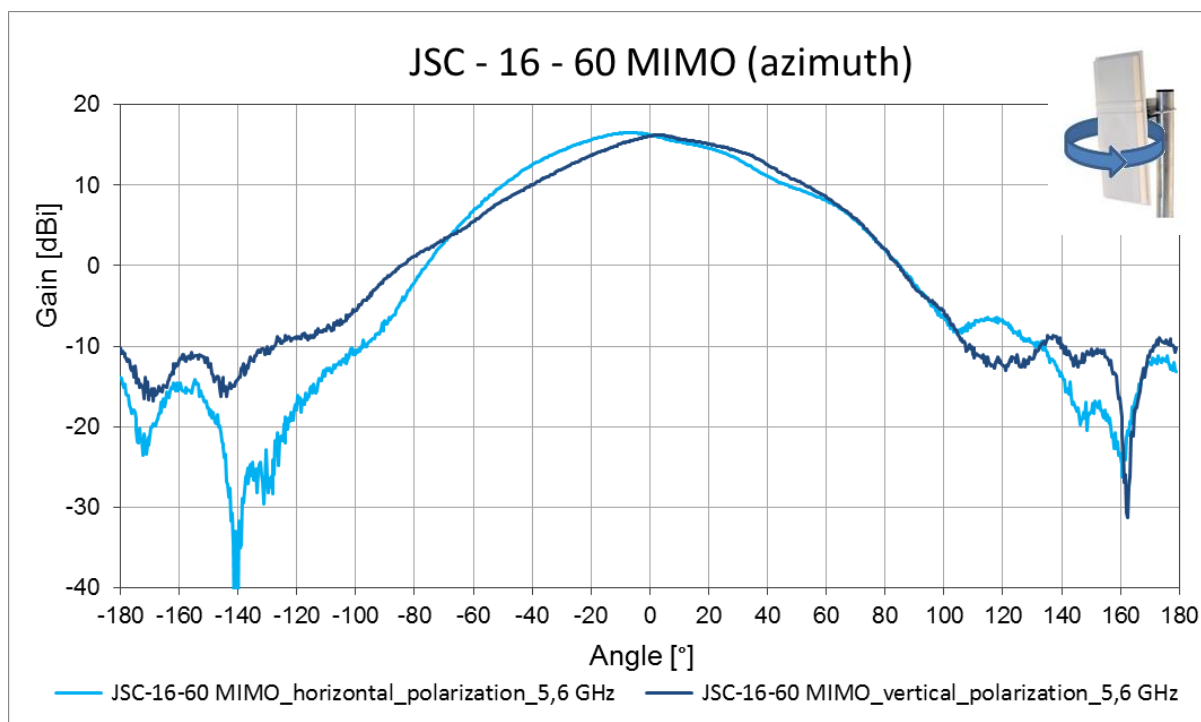
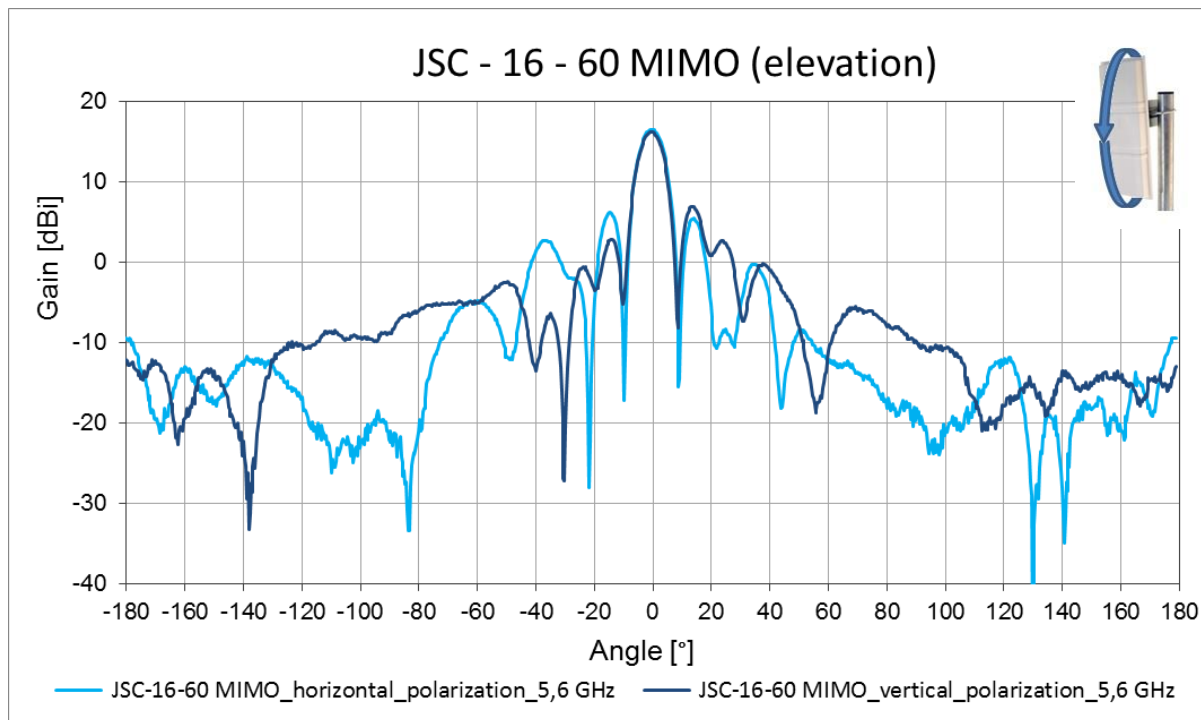
The antenna can be used in combination with an outdoor box GentleBOX JR – 200 for AP, RouterBOARDS and other electronics or with bracket GentleCLIP for easy installation of Rocket M5 or other devices with the same clipped system.

Package:

- **By 1 pcs including bracket for mast**
- **Package dimensions – 130 mm x 345 mm x 75 mm**

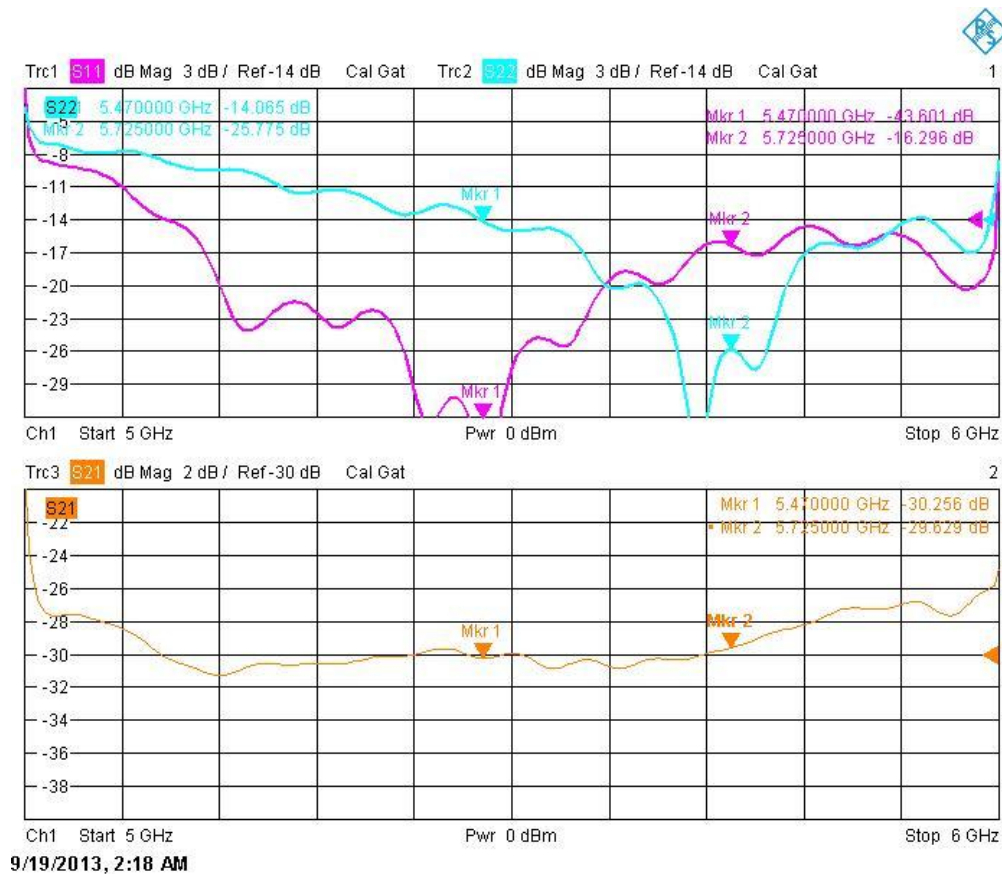
Sector antenna JSC - 16 - 60 MIMO

The radiation pattern:



Sector antenna JSC - 16 - 60 MIMO

The impedance matching and isolation between connectors:



Outline:



Fig. 1 Basic antenna design

Sector antenna JSC - 16 - 60 MIMO

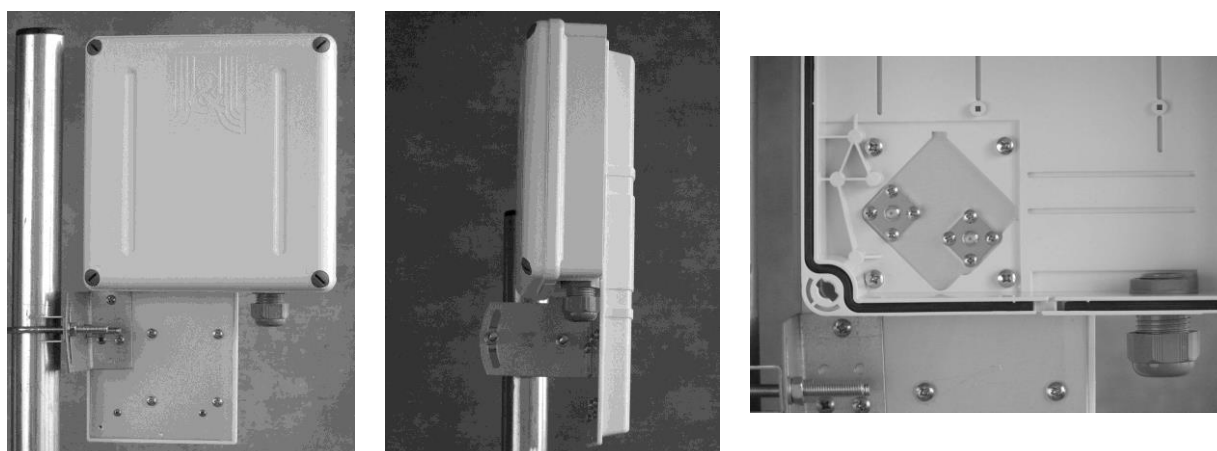


Fig. 2 Use of antenna with GentleBOX



Fig. 3 Use of antenna with GentleCLIP

Web page: <http://en.jirus.com/anteny-5ghz/jsc-16-60mimo>