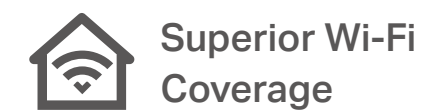
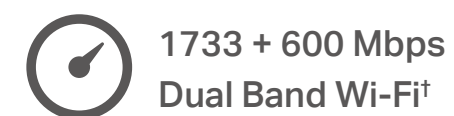




AC2300 MU-MIMO Wi-Fi Router

Best for Simultaneous
4K Streaming and Gaming

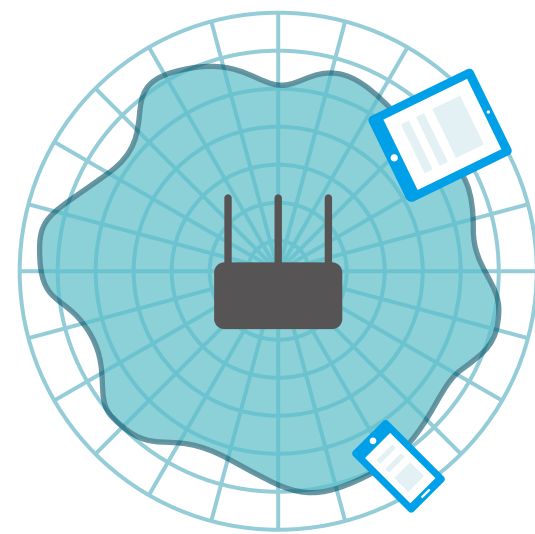
Archer C2300



Highlights

4 Antennas & Beamforming for Maximum Coverage

Equipped with three external antennas and one internal antenna, Archer C2300 creates stronger and more reliable networks for all to enjoy in your home. Beamforming technology concentrates the Wi-Fi signal towards your connected devices, providing better Wi-Fi range and network performance.



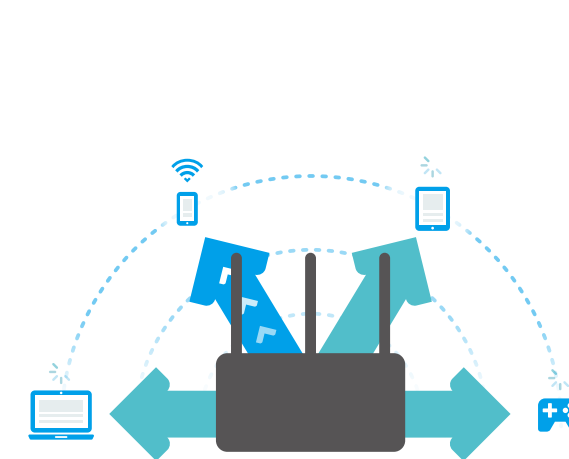
Regular Router



Archer C2300

MU-MIMO for 4× Faster Connections[‡]

MU-MIMO technology serves multiple devices at once, reducing wait time, increasing Wi-Fi throughput for every device, and making each stream more efficient.



Traditional Router

Sends data to one device at a time



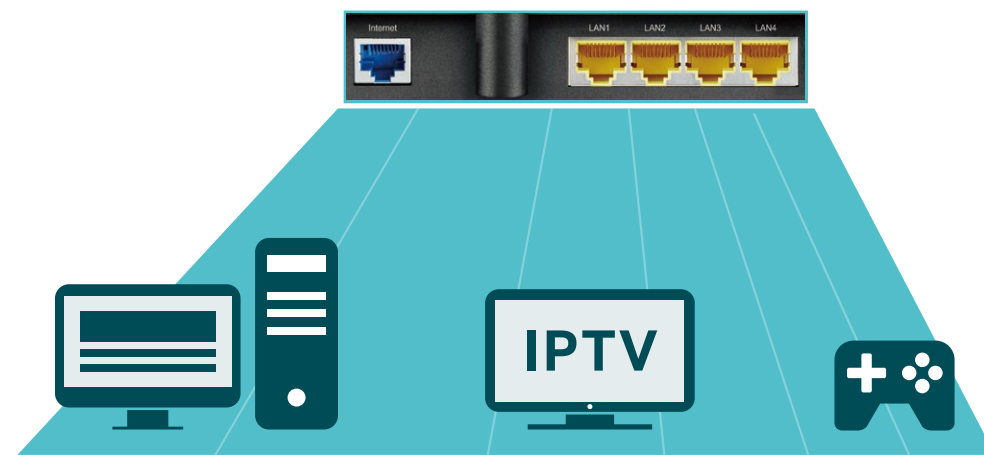
MU-MIMO Router

Simultaneously sends data to multiple devices

Highlights

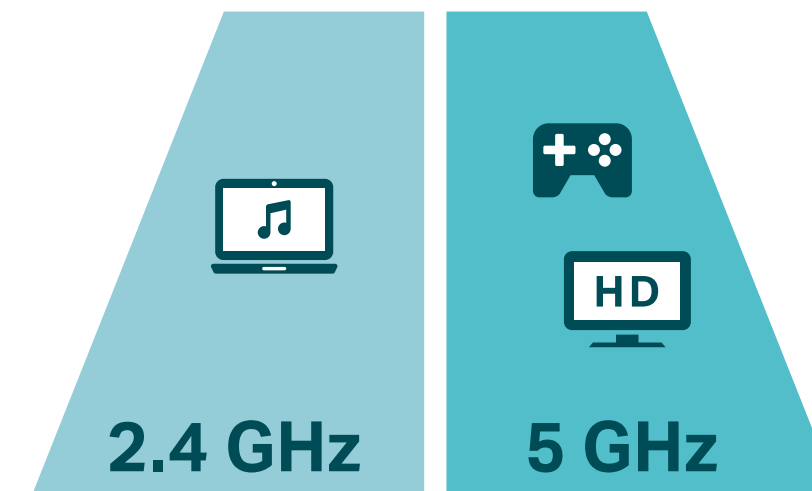
Full Gigabit Ports

A Gigabit WAN port enables bottleneck-free access bandwidth. 4 Gigabit LAN ports help wired devices achieve peak performance for HD streaming and gaming.



Smart Connect

Smart Connect technology surveys the Wi-Fi environment to intelligently assign devices to the best available band, balancing the network load to give each device optimized connection and throughput.

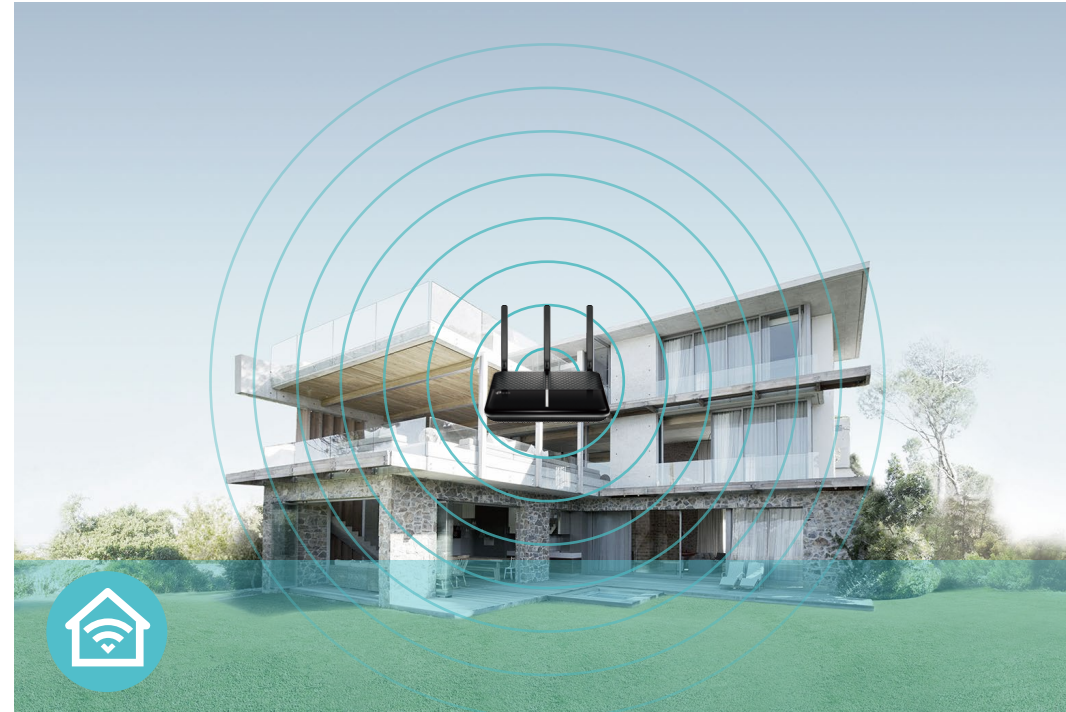


Features



Speed

- **Ultimate Wireless Speed** – Combined wireless speeds up to 600 Mbps (2.4GHz) and 1733 Mbps (5GHz)
- **MU-MIMO Technology** – Simultaneously exchanges data with several devices, achieving speeds which are 4x faster than standard AC routers
- **Support 802.11 ac** – Provides a data transfer rate 3 times faster than 802.11n for each stream



Wi-Fi Range

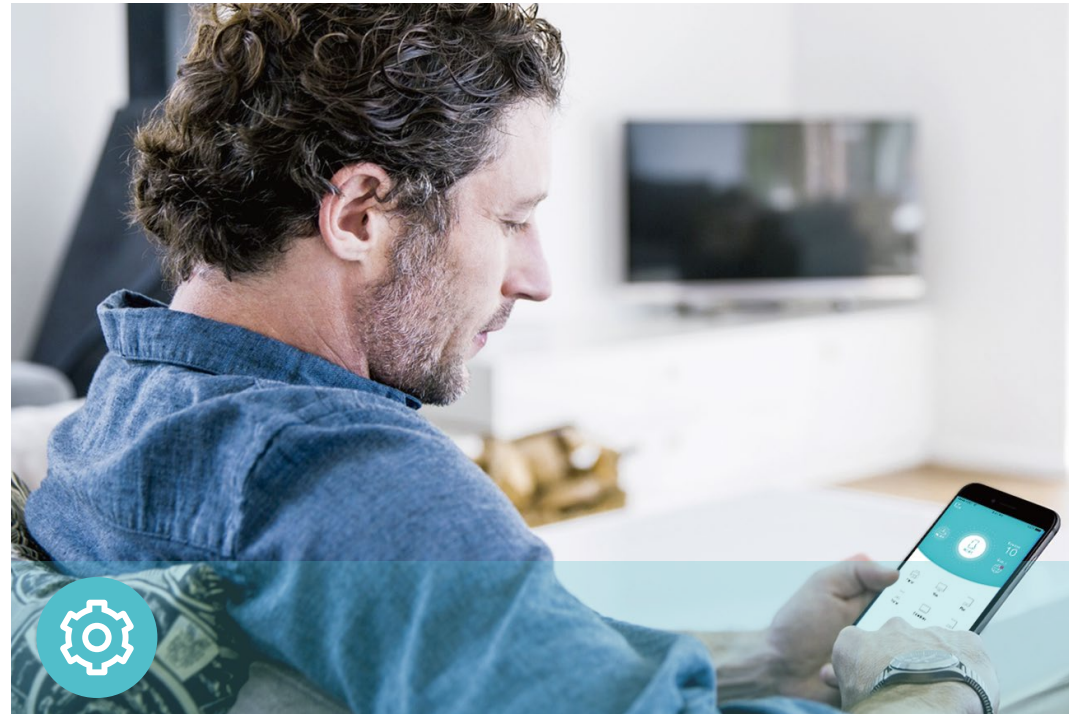
- **Ultimate Range Wi-Fi** – Three external antennas and one internal antenna ensure the widespread Wi-Fi coverage and a stable connection
- **Beamforming Technology** – Concentrates Wi-Fi signal to individual devices for stronger connections



Reliability

- **Simultaneous Dual Band** – Separate Wi-Fi bands enable more devices to connect to your network without a drop in performance
- **Smart Connect** – Intelligently assigns each device to the best Wi-Fi band
- **Airtime Fairness** – Balances airtime usage of connected devices to improve overall throughput and efficiency
- **IPTV** – Supports IGMP Proxy/Snooping, Bridge and Tag VLAN to optimize IPTV streaming

Features



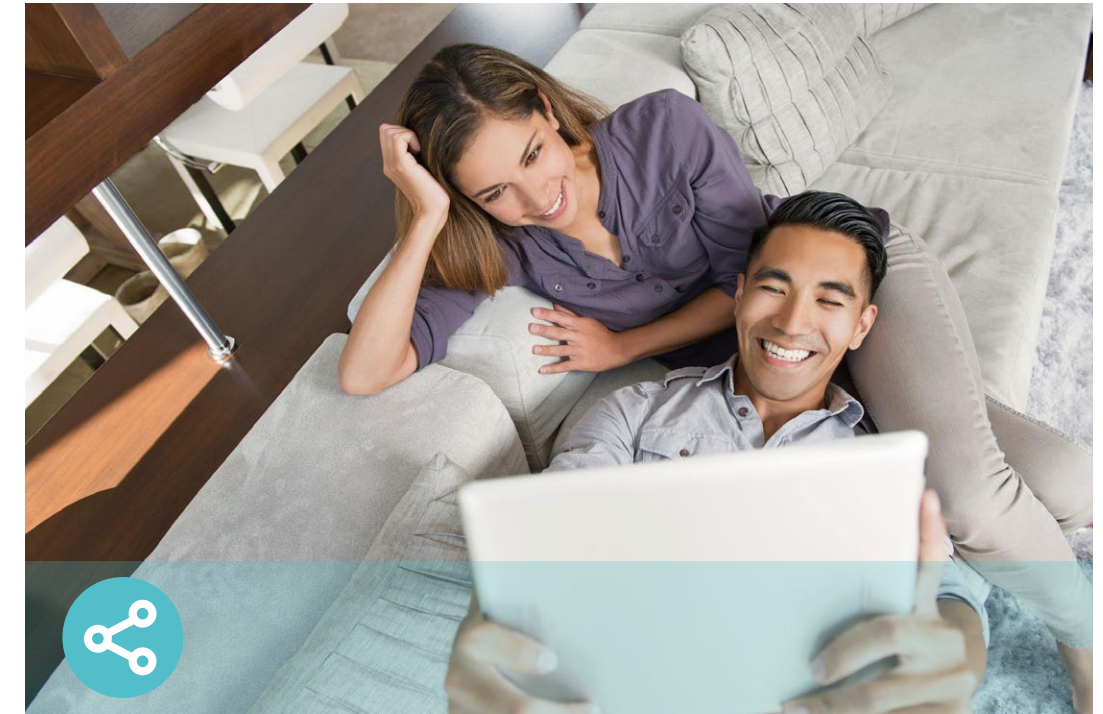
Ease of Use

- Intuitive Web UI – Ensures quick and simple Installation without hassle
- Fast Encryption – One-touch WPA wireless security encryption with the WPS button
- Wi-Fi On/Off – Turn on/off wireless radio as needed using the Wi-Fi On/Off button
- Power On/Off – Conveniently power on or off your router as required
- Hassle-free Management with Tether App – Network management is made easy with the TP-Link Tether App, available on any Android and iOS device



Security

- Guest Network – Keeps your main network secure by creating a separate network for friends and visitors
- Access Control – Establishes a whitelist or blacklist to allow or restrict certain devices to access the internet
- Secure VPN Access – Connects to a private network with a safe and secure OpenVPN and PPTP VPN connection
- Encryptions for Secure Network – WPA-PSK and WPA2-PSK encryptions provide active protection against security threats



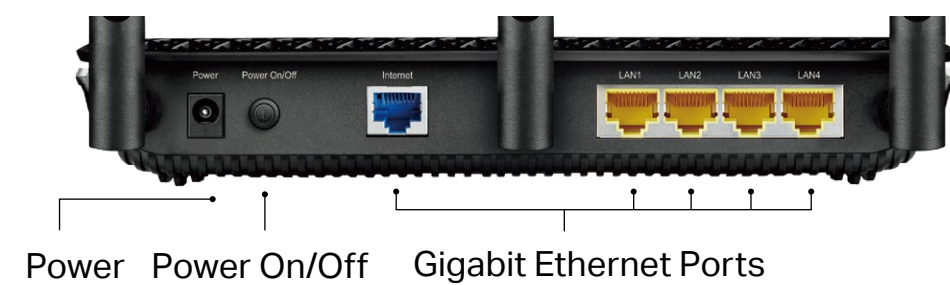
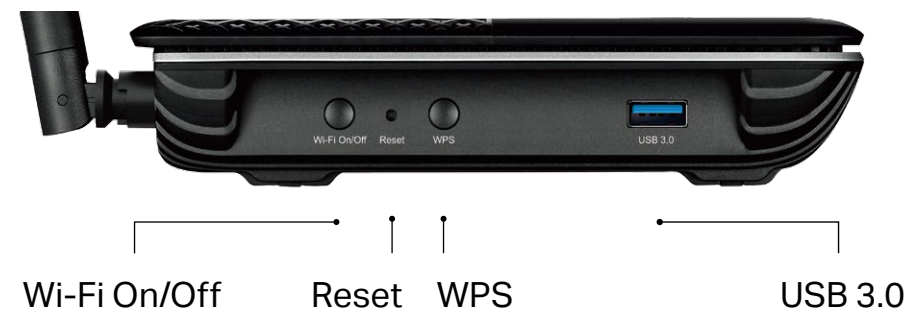
Easy Sharing

- 10x Faster Transfer Speed – The USB 3.0 port provides up to 10x faster USB hard drive access than USB 2.0 connections
- USB Port for Fast Sharing – With the USB port, you can access and share your files locally, or remotely through the router's FTP server
- Media Sharing – Allows you to play music, watch videos and view photos from any device on your network

Specifications

Hardware

- Ethernet Ports: 4× Gigabit LAN Port + 1× Gigabit WAN Port
- USB Port: 1× USB 3.0 Port
- Buttons: Wi-Fi On/Off Button, Power On/Off Button, Reset Button, WPS Button
- Antennas: 3× External Antenna + 1× Internal Antenna
- External Power Supply: 12VDC/2.5A (US version), 12VDC/2A (EU version)
- Dimensions (W x D x H): 8.5 × 6.5 × 1.4 in. (216 × 164 × 36.8 mm)



Wireless

- Wireless Standards: IEEE 802.11ac/n/a 5GHz, IEEE 802.11b/g/n 2.4 GHz
- Frequency: 2.4 GHz and 5 GHz
- Signal Rate: 1733 Mbps at 5 GHz, 600Mbps at 2.4 GHz†
- Transmit Power:
 - CE: <13.5dBm(2.4 GHz), <16.5dBm(5 GHz)
 - FCC: <25dBm(2.4 GHz), <24dBm(5 GHz)
- Reception Sensitivity:
 - 5GHz:
 - 11ac80M MCS11: -58dBm, 11ac80M MCS0: -88dBm
 - 11ac40M MCS11: -61dBm, 11ac40M MCS0: -91dBm
 - 11ac20M MCS11: -63dBm, 11ac20M MCS0: -95dBm
 - 54M: -76dBm, 6M: -95dBm
 - 2.4GHz:
 - 11n40M MCS9: -63dBm, 11n40M MCS0: -89dBm
 - 11n20M MCS8: -67dBm, 11n20M MCS0: -92dBm
 - 54M: -75dBm, 11M: -90dBm, 6M: -93dBm, 1M: -98dBm
- Wireless Function: Enable/Disable Wireless Radio, WDS Bridge, WMM, Wireless Statistics
- Wireless Security: Enable/Disable SSID Broadcast, 64/128-bit WEP, WPA/WPA2, WPA-PSK/WPA-PSK2 encryptions, QSS, Wireless MAC Filter

Specifications

Software

- Quality of Service: WMM, Bandwidth Control
- WAN Type: Dynamic IP, Static IP, PPPoE, PPTP(Dual Access), L2TP(Dual Access)
- Management: Access Control, Local Management, Remote Management
- DHCP: Server, DHCP Client List, Address Reservation
- Port Forwarding: Virtual Server, Port Triggering, UPnP, DMZ
- Dynamic DNS: DynDns, NO-IP, TP-Link
- Access Control: Parental Control, Local Management Control, Blacklist, Whitelist
- Firewall Security: DoS, SPI Firewall, IP and MAC Address Binding
- Protocols: IPv4, IPv6
- USB Sharing: Supports Samba(Storage), FTP Server, Media Server
- Guest Network: 2.4 GHz guest network x 1, 5 GHz guest network x 1

Others

- Certification:
CE, FCC, RoHS
- System Requirements:
Microsoft Windows 98SE/NT/2000/XP/Vista™/7/8/8.1/10, MAC OS, NetWare, UNIX or Linux

Internet Explorer 11, Firefox 12.0, Chrome 20.0, Safari 4.0, or other Java-enabled browser

Cable or DSL Modem

Subscription with an internet service provider (for internet access)
- Environment:
Operating Temperature: 0°C~40°C (32°F ~104°F)
Storage Temperature: -40°C~70°C (-40°F ~158°F)
Operating Humidity: 10%~90% non-condensing
Storage Humidity: 5%~90% non-condensing
- Package Contents
AC2300 MU-MIMO Wi-Fi Router Archer C2300

Power Adapter

RJ45 Ethernet Cable

Quick Installation Guide



For more information, please visit

<http://www.tp-link.com/products/details/Archer-C2300.html>

or scan the QR code left

Attention: This device may only be used indoors in all EU member states and EFTA countries.

This device complies with part 15 of the FCC Rules. Operation is subject to the following two conditions: (1) This device may not cause harmful interference, and (2) this device must accept any interference received, including interference that may cause undesired operation. Specifications are subject to change without notice. All the brands and product names are trademarks or registered trademarks of their respective holders.

[†]Maximum wireless signal rates are the physical rates derived from IEEE Standard 802.11 specifications. Actual wireless data throughput and wireless coverage are not guaranteed and will vary as a result of network conditions, client limitations and environmental factors, including building materials, obstacles, volume and density of traffic and client location.

[‡]Four or more 1×1 MU-MIMO client devices must be connected to achieve up to four times faster performance. Use of MU-MIMO requires clients to also support MU-MIMO.

©2020 TP-Link