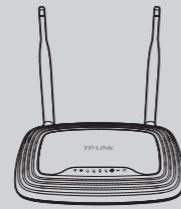


Quick Installation Guide

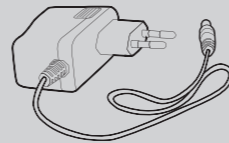
300Mbps Multi-Function Wireless N Router

MODEL NO. TL-WR842ND

Package Contents



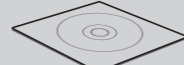
TL-WR842ND



Power Adapter



Ethernet Cable

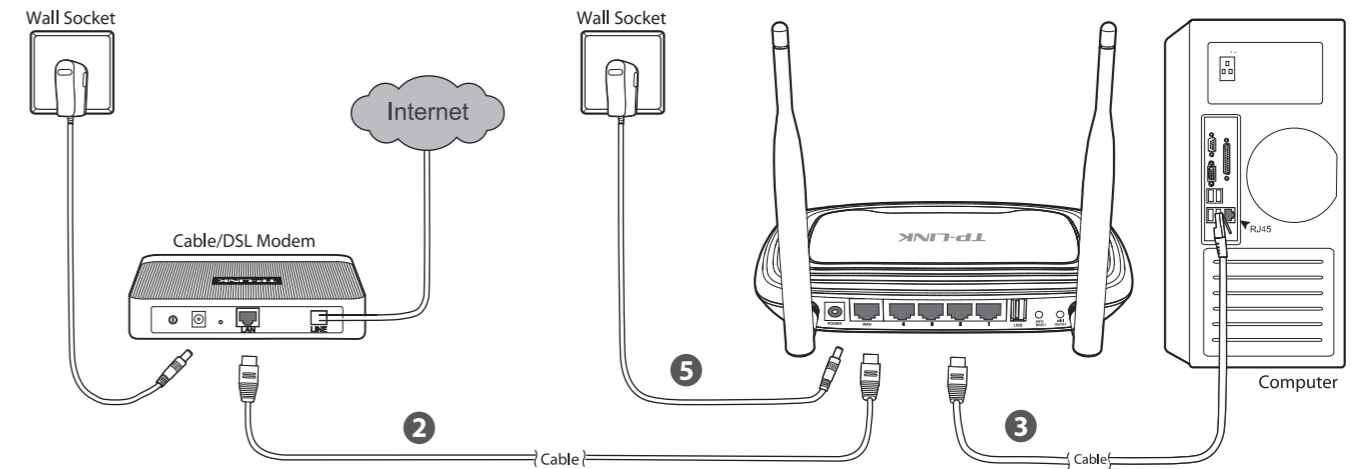


Resource CD

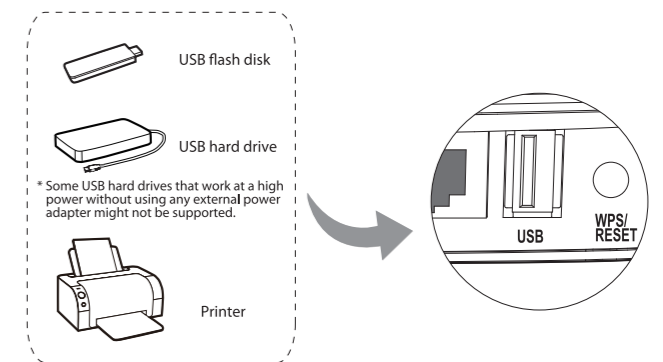


QIG

1 Hardware Connection



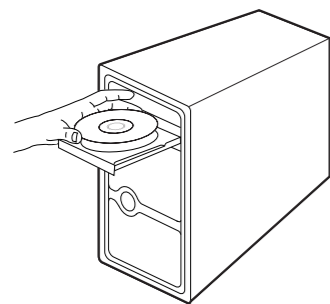
- 1 Power off your modem.
 - 2 Connect the **WAN** port on your Router to the Modem's **LAN** port with an Ethernet cable.
 - 3 Connect your computer to one of the LAN ports labeled 1~4 on the Router with an Ethernet cable.
- Note** To use the Router to share files or printer, plug an external USB hard drive/USB flash disk into the **USB** port, or connect a USB printer to the **USB** port. For specific configuration procedures of the USB Printer, please refer to **Appendix 1**.
- 4 Power on the modem and wait for one minute.
 - 5 Plug the provided Power Adapter into the **POWER** jack and the other end to a standard electrical wall socket.



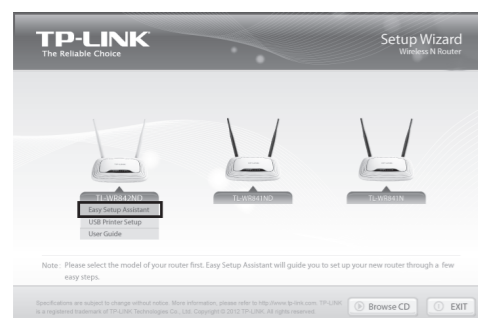
2 Configuration for Windows with Setup Wizard

If you are using a MAC/Linux or a Windows computer without a CD drive to run the mini CD, please refer to **Appendix 2** for configuration.

- 1 Insert the TP-LINK Resource CD into the CD-ROM drive.



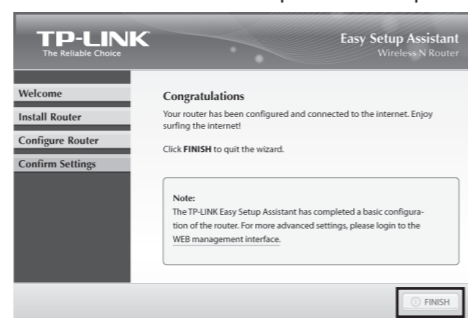
- 2 Select **TL-WR842ND** and click **Easy Setup Assistant**.



- 3 Select your language from the drop-down menu. Click **START** and the **Easy Setup Assistant** will guide you step by step to set up the Router.



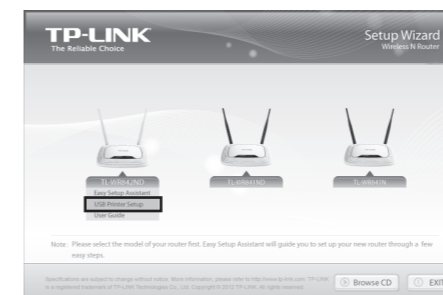
- 4 Follow the instructions until you see the screen below. Click **FINISH** to complete the setup.



Appendix 1: Configuring the USB Printer

The USB Printer Setup Wizard is currently supported in Windows 7 32/64bit, Windows Vista 32/64bit, Windows XP 32/64bit. Please follow the steps below to finish the printer configuration. For Mac users, please go to our website www.tp-link.com to download the utility.

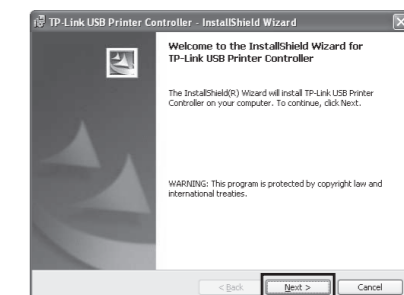
- 1 Insert the TP-LINK Resource CD into the CD-ROM drive. Select **TL-WR842ND** and click **USB Printer Setup**.



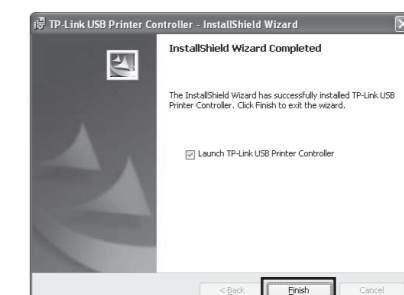
- 2 Click **START** and the **USB Printer Setup Wizard** will guide you step by step to install the USB Printer.



- 3 Click **Next** and go on to install TP-LINK USB Printer Controller. Then follow the instructions step by step.



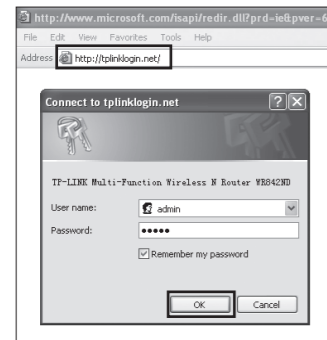
- 4 Click **Finish** on the final screen to complete the installation for TP-LINK USB Printer Controller.



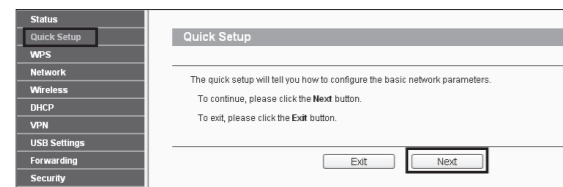
Note For more details about the Print server, please refer to **Print Server Application Guide** downloaded from our website: www.tp-link.com. For more details about the configuration of USB Storage/FTP Server/Media Server functions for USB ports, please refer to **User Guide** in the resource CD.

Appendix 2: Configure the Router via Web Management Page (for Mac OS X/Linux users or Windows users who can't run the mini CD)

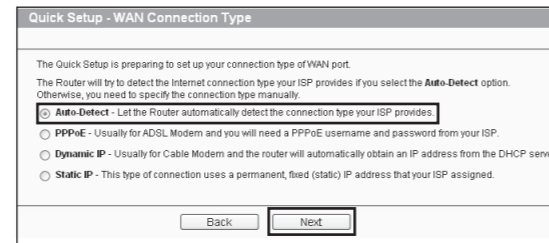
- 1** Open your web browser and type **http://tplinklogin.net** in the address bar. Then enter **admin** for both user name and password to log in.



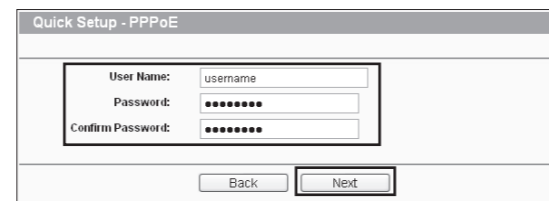
- 2** Click **Quick Setup** in the main menu and click **Next**.



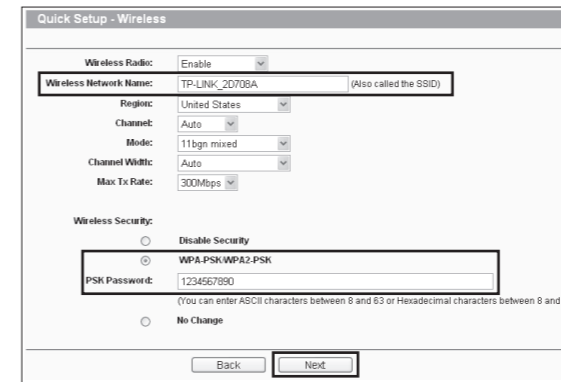
- 3** Select **Auto-Detect** to detect the Internet connection type and click **Next**.



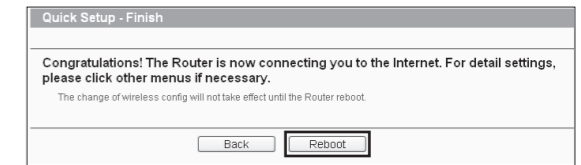
- 4** Here we take connection type **PPPoE** for example. Enter the User Name and Password provided by your ISP. After confirming the password, click **Next**.



- 5** Configure your network name (SSID) and set a password for your Router to prevent outside intrusion. Click **Next** to continue.



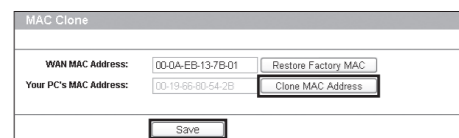
- 6** Click **Reboot** or **Finish** to make your settings take effect.



Troubleshooting

T1. What can I do if I cannot access the Internet?

- 1) Check to verify all connections are connected properly. Try with different Ethernet cables to ensure they are working properly.
- 2) Check to see if you are able to access the Router's web management page. If not, please refer to "T2. What can I do if I cannot open the web management window?".
- 3) Please log in the web management page (<http://tplinklogin.net>), click the menu "Network > WAN", and ensure that the WAN Connection Type is Dynamic IP; this is the suitable connection type for most DSL/Cable modem and other network.
- 4) For cable modem users, please click menu "Network > MAC Clone". Click **Clone MAC Address** button and then click **Save**. Reboot the modem first and then the Router, try to access the Internet from your computer. If the problem persists, please go to the next step.



- 5) Connect your computer directly to your modem and attempt to access the Internet. If you are still unable to access the Internet, please contact your internet provider for further assistance.

T2. What can I do if I cannot open the web management window?

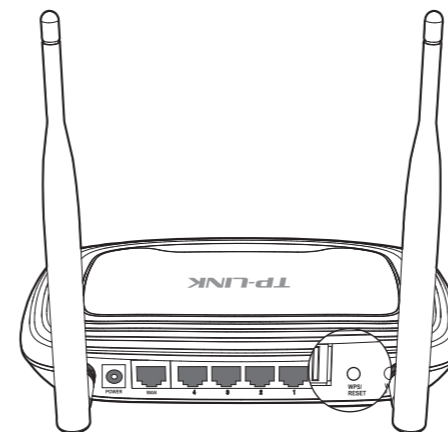
- 1) **For Windows 7/Vista**
Go to 'Start > Settings > Control Panel'. Click 'View network status and tasks > View status > Properties' and double-click 'Internet Protocol Version 4 (TCP/IPv4)'. Select 'Obtain an IP address automatically', choose 'Obtain DNS server address automatically' and click 'OK'.
- 2) **For Windows XP/2000**
Go to 'Start > Control Panel'. Click 'Network and Internet Connections > Network Connections'. Right-click 'Local Area Connection', select 'Properties' and then double-click 'Internet Protocol (TCP/IP)'. Select 'Obtain an IP address automatically', choose 'Obtain DNS server address automatically' and click 'OK'.

T3. What can I do if I forget my password?

- 1) Restore the Router's configuration to its factory default settings. If you don't know how to do that, please refer to "T4. How do I restore my Router's configuration to its factory default settings?"
- 2) Use the default user name and password: **admin, admin**.
- 3) Try to configure your Router once again by following the instructions in the previous steps of this QIG.

T4. How do I restore my Router's configuration to its factory default settings?

If your Router does not work properly, you can reset it and then configure it again. With the Router powered on, press and hold the **WPS/RESET** button on the rear panel for approximately 8 seconds before releasing it.



Technical Support

- For more troubleshooting help, go to www.tp-link.com/support/faq.asp
- To download the latest Firmware, Driver, Utility and User Guide, go to www.tp-link.com/support/download.asp

■ For all other technical support, please contact us by using the following details:

<p>Global Tel: +86 755 26504400 E-mail: support@tp-link.com Service time: 24hrs, 7 days a week</p> <p>Singapore Tel: +65 62840493 E-mail: support.sg@tp-link.com Service time: 24hrs, 7 days a week</p> <p>UK Tel: +44 (0) 845 147 0017 E-mail: support.uk@tp-link.com Service time: 24hrs, 7days a week</p> <p>USA/Canada Toll Free: +1 866 225 8139 E-mail: support.usa@tp-link.com Service time: 24hrs, 7days a week</p> <p>Malaysia Tel: 1300 88 875465 (1300 88TPLINK) E-mail: support.my@tp-link.com Service time: 24hrs, 7days a week</p> <p>Russian Federation Tel: 8 (499) 754-55-60 8 (800) 250-55-60 (toll-free call from any RF region) E-mail: support.ru@tp-link.com Service time: From 10:00 to 18:00 (Moscow time) *Except weekends and holidays in Russian Federation</p> <p>Indonesia Tel: (+62) 021 6259 135 E-mail: support.id@tp-link.com Service time: Monday to Friday 9:00 -12:00 ; 13:00 -18:00 *Except public holidays</p> <p>Switzerland Tel: +41 (0)848 800998 (German Service) E-mail: support.ch@tp-link.com Fee: 4-8 Rp/min, depending on rate of different time Service time: Monday to Friday 9:00 AM to 6:00 PM. GMT+ 1 or GMT+ 2 (Daylight Saving Time)</p>	<p>Australia & New Zealand Tel: AU 1300 87 5465 NZ 0800 87 5465 E-mail: support@tp-link.com.au Service time: 24hrs, 7 days a week</p> <p>Turkey Tel: 444 19 25 (Turkish Service) NZ 0800 87 5465 E-mail: support.tr@tp-link.com Service time: 9:00 AM to 6:00 PM, 7days a week</p> <p>Italy Tel: +39 02 66987799 E-mail: support.it@tp-link.com Service time: Monday to Friday, 9:00 AM to 6:00 PM</p> <p>Ukrainian Tel: +380 (44) 590-51-14 E-mail: support.ua@tp-link.com Service time: Monday to Saturday 08:00 AM to 08:00 PM</p> <p>Brazilian Toll Free: 0800-770-4337 (Portuguese Service) E-mail: support.br@tp-link.com Service time: Monday to Saturday 08:00 AM to 08:00 PM</p> <p>Poland Tel: +48 (0) 801 080 618 / +48 22 721 7563 (if calls from mobile phone) E-mail: support.pl@tp-link.com Service time: Monday to Friday 9:00 AM to 5:00 PM. GMT+1 or GMT+2 (Daylight Saving Time)</p> <p>Germany / Austria Tel: +49 1805 875465 (German Service) +49 1805 TPLINK E-mail: support.de@tp-link.com Fee: 0.14 EUR/min from the German fixed phone network and up to 0.42EUR/min from mobile phone. Service Time: Monday to Friday, 9:00 AM to 6:00 PM, GMT+1 or GMT+2 (Daylight Saving Time in Germany) * Except bank holidays in Hesse</p>
--	--