

The Simper

Product Catalog



The Simper is compact, simplistic concept of radio with TwistPort waveguide connector.

The Simper demonstrates perfect harmony between **Simplicity** and **Performance**. It unveils new concept of highly scalable, performing and easy to use wireless equipment that provides unbeatable mix of features.

The Simper is simply perfect radio.

www.rfelements.com/simper

Simper

Simply Perfect Radio



FEATURES

NO LOSS

The connection with antennas via original TwistPort connector is virtually lossless.

SCALABLE

Simper is highly scalable concept of simplistic radios combined with wide range of antennas.

EASY

Deployment of Simper radio is a simple "twist and snap" to an antenna.

MULTIPLATFORM

Simper comes in multiple models running different OS. No need to migrate to new wireless platform.

SIMPLE

Simper is compact and essentially simple product delivering the best wireless performance.

COST EFFECTIVE

Simper is the best cost performing wireless networking product today.

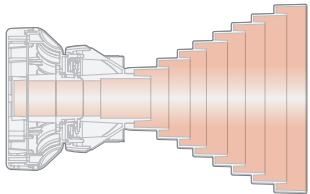
Simper unveils new concept of highly scalable wireless equipment. Simper is the perfect match with growing requirements on performance, versatility and cost effectivity.





TWISTPORT LOSSLESS CONNECTOR

Simper radios feature TwistPort Connector, our original quick-locking waveguide port. Connection and disconnection is brilliantly simple and can be done with one hand. TwistPort is the key feature to Simper scalability and performance.



TwistPort Connector is virtually lossless. There are no traditional RF connectors or RF cables, that cause signal loss. TwistPort compatible antenna products include Symmetrical Sectors and UltraDish TP Antennas.

SIMPER RADIOS

SIMPER 5M-N.LITE

802.11a/n, MikroTik RouterOS, 27dBm wireless, dual chain 802.11n and nv2 protocols. For PtP or CPE.

SIMPER 5M-N.HIPO

802.11a/n, output power 1000mW. MikroTik RouterOS, PtP, PtM modes. For long distance links with high throughput.

SIMPER 5M-AC

802.11ac, 256QAM. MikroTik RouterOS, PtP, PtM modes. Gigabit Ethernet, 10kV ESD protection. Die cast aluminium enclosure.



SIMPER RADIO ADAPTORS



Make traditional connectorized radios compatible with TwistPort.

CAMBIUM NETWORKS EPMP1000 ADAPTOR

This Simper Adaptor converts ePMP1000 connectorized radios into TwistPort compatible devices.



UBNT ROCKET M5 ADAPTOR

Even old Rocket M5 deserves it. Easy conversion kit opens more opportunities also for Rocket M5.



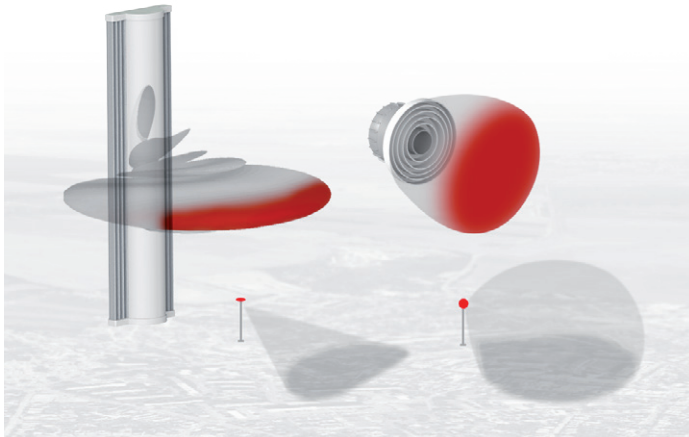
UBNT ROCKET AC ADAPTOR

Plug-in the newest Rocket AC radio and use it with any TwistPort compatible antenna.



WHAT IS SYMMETRICAL SECTOR?

Traditional Sector vs. Symmetrical Sector
3D Radiation Diagram



Symmetrical Sector antennas have symmetrical beam pattern in both horizontal and vertical planes. The beam pattern does not vary with frequency, and antenna gain is balanced over wide frequency range.

Symmetrical Horn antennas are low loss and have attenuated side radiation lobes. These features make them excellent for use as Sector antennas.

EXCELLENT SCALABILITY

Seven new models of Symmetrical Sector Antennas cover radiation angles from 30° to 90°.



SH-TP 5-90



SH-TP 5-80



SH-TP 5-70



SH-TP 5-60



SH-TP 5-50

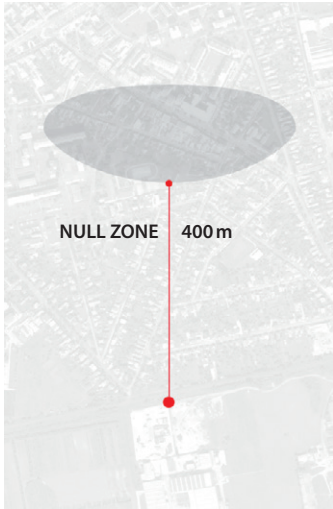


SH-TP 5-40



SH-TP 5-30

Traditional Sector



Symmetrical Sector



MORE COVERAGE

Symmetrical Sectors cover more area than traditional Sectors with narrow vertical beamwidth.

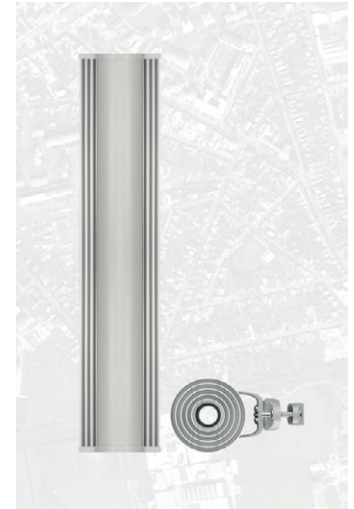
NO NULL

Symmetrical Sectors have no issues with connecting close clients.



EASY CO-LOCATION

As a result of very low sidelobes of horn antennas, Symmetrical Sectors are ideal for cluster deployments and co-location.



TWISTPORT CONNECTOR

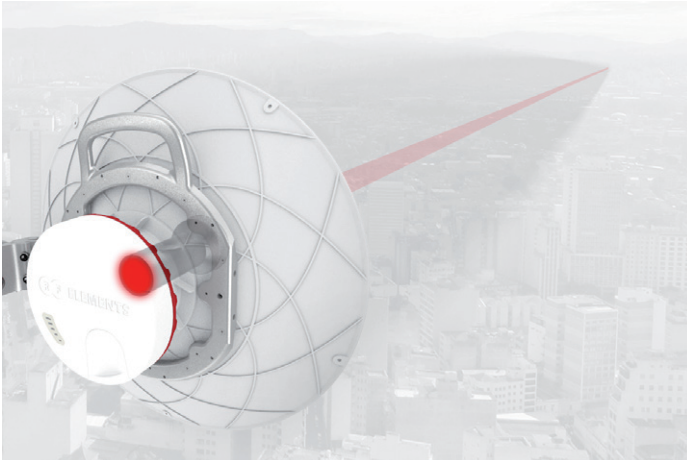
Connecting Simper Radios to Sector Antennas is a simple "twist and snap".

COMPACT SIZE

Symmetrical Sector antennas are compact and easy to mount virtually anywhere.

WEATHERPROOF

Made of the best weather resistant materials: aluminium, plastic and stainless steel.



ULTRADISH TP ANTENNAS

TOP PERFORMANCE

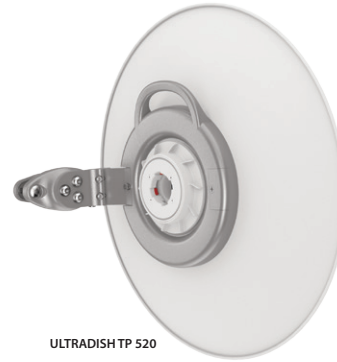
TwistPort connector mates radio and antenna virtually lossless. High directivity of beam secures top performance and high throughput.

REDUCED INTERFERENCE

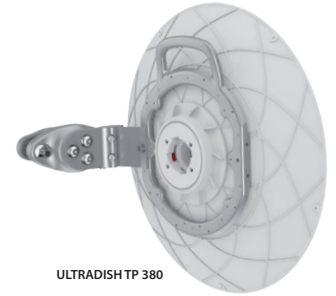
Depressed sidelobe radiation reduces interference and enables installation in crowded areas.

WEATHERPROOF

UltraDish TP Antennas are made of best weather resistant materials as aluminum, plastic and stainless steel. There are no traditional RF connectors or RF jumpers that can corrode.



ULTRADISH TP 520



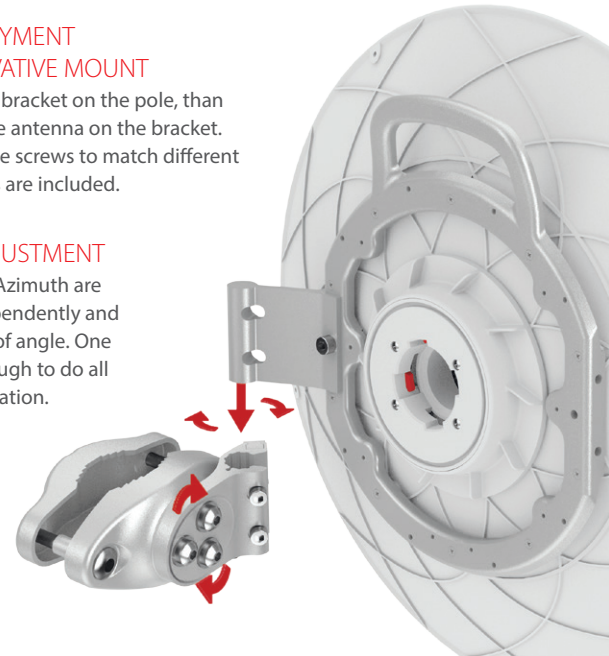
ULTRADISH TP 380

EASY DEPLOYMENT WITH INNOVATIVE MOUNT

First install the bracket on the pole, then simply slide the antenna on the bracket. Two sets of pole screws to match different pole diameters are included.

PRECISE ADJUSTMENT

Elevation and Azimuth are adjusted independently and in wide range of angle. One hex tool is enough to do all antenna installation.



Wireless Network Equipment



RF elements s.r.o.

Gagarinova 7/A, Bratislava
821 05, Slovakia

Phone: +421 2 3260 3711

Email: office@rfelements.com

www.rfelements.com/simper