

# POCKET SWITCH PS2216

## 16-PORT COMPACT FAST ETHERNET SWITCH



The Comlex PS2216 pocket switch is small in size but rich in features. The WinSmart utility provided with PS2216 enables users to easily configure the advance features of the switch such as Port-Based Virtual LAN, Port Trunking and Port Priority making it the most feature rich switch in its category. The Port-Based Virtual LAN feature allows setting up of 14 individual smaller segments with the 9<sup>th</sup> & 16<sup>th</sup> port as the common port for all Virtual LANs. This feature not only improves network management, but enhances privacy of the individual Virtual LAN. Port Trunking improves the up-linking bandwidth and transfer speed between switches providing better performance for your network. Port Priority gives quality of service to your network traffic like video-on-demand services. It is the cost effective switch for small and medium size offices.

- ◆ WinSmart Utility enables users to easily configure the advance features of the switch
- ◆ Port Priority feature provides improved data transmission
- ◆ Port Trunking feature provides the ability to scale up to a higher bandwidth
- ◆ Compact but yet versatile features makes PS2216 an ideal solution for any deployment

- ◆ **High-Performance** - With its backplane capacity of 3.2Gbps, data transfer is at an average of 200 Mbps at each of the 16 ports at full duplex mode allowing every node to perform at their maximum capability.
- ◆ **Segment your Network** - The PS2216 switch is able to segment network into 14 individual virtual local area networks (VLAN). The 9<sup>th</sup> & 16<sup>th</sup> port being the common port for all the Virtual LANs.
- ◆ **Cascading** - Port Trunking provides the ability to scale up to a higher bandwidth with the next layer of switch. Port Trunking feature enables uplinking of 4 ports to another switch that ensure faster and higher data bandwidth.

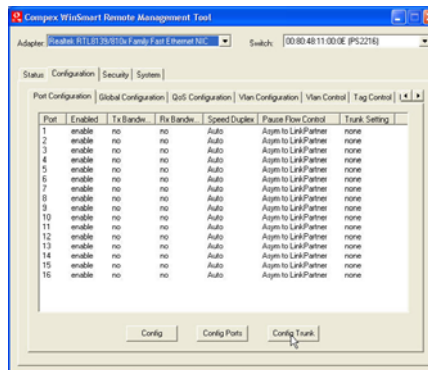


Fig. 1 Port VLAN Configuration Screenshot

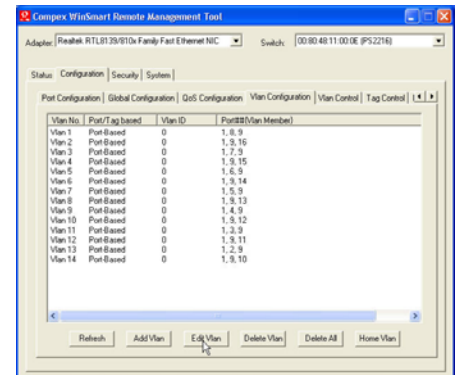


Fig. 2 Port Trunking Configuration Screenshot

- ◆ **Quality of Service** - The Port Priority feature allows quality of service for bandwidth-intensive network traffic like video-on-demand, database applications.
- ◆ **Plug and Play Operations** - The PS2216 can operate out of the box with no further configuration needed. Auto MDI/MDIX is featured in every port that allows any type of Category 5 Ethernet cable to be used.
- ◆ **Switching Architecture** - Full bandwidth, non-blocking and collision-free frame forwarding enables data packets to be transfer at maximum performance speed.
- ◆ **Port Priority** - Giving quality of service to bandwidth-intensive network services like video-on-demand.

# POCKET SWITCH PS2216

## TECHNICAL SPECIFICATIONS

### SWITCHING CAPACITY

3.2Gbps

### MAC ADDRESS TABLE

8K

### INDUSTRY STANDARDS

IEEE 802.3 (Ethernet)  
IEEE 802.3u (Fast Ethernet)  
IEEE 802.3x (Flow Control)  
FCC Class A; CE mark

### CONNECTORS

16 port auto-negotiation 10 Base-T/ 100Base-Tx configured with Auto MDI/MDIX

### STORE & FORWARD SWITCHING

Store & Forward

### ADVANCED FEATURES

- Supports Port Trunking function with load balancing and fault tolerance
- Speed, Duplex, and 802.3x flow-control ability auto-negotiation

### SAFETY & EMISSIONS

Safety Certifications	UL, CSA, TUV/GS
Emissions	EN 55022 Class A, IEC 61000-3-2, IEC 61000-3-3
Immunity	EN55024

### LED INDICATORS

Power/ Link/ Activity/ Port

### POWER REQUIREMENTS

3.3V

### ENVIRONMENTAL SPECIFICATIONS

Temperature	Operating	0°C to 40°C
	Storage	-5°C to 60°C
Humidity	Operating	10% to 90% (non-condensing)
	Storage	5% to 80% (non-condensing)

### DIMENSIONS & WEIGHT

Dimensions	151 x 92 x 35mm (L x W x H)
Weight	260 grams



Compex Systems Pte Ltd  
135 Joo Seng Road,  
#08-01  
PM Industrial Building  
Singapore 368363

tel: (65) 6288 8220  
fax: (65) 6280-9947  
www.compex.com.sg

Compex Inc, USA.  
840 Columbia Street,  
Suite B Brea, CA 92821

tel: (714) 482 0333  
fax: (714) 482-0332  
www.cpx.com

